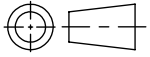
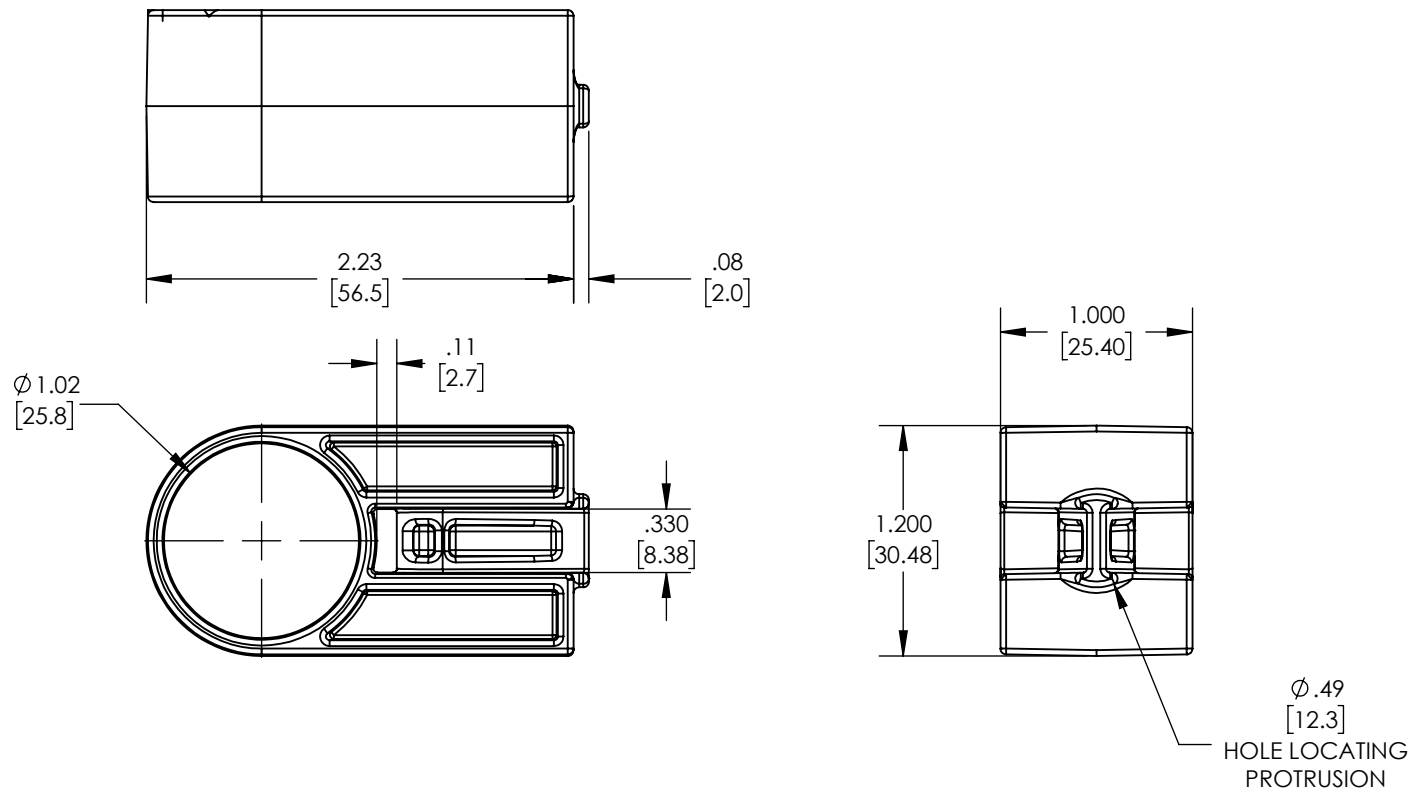
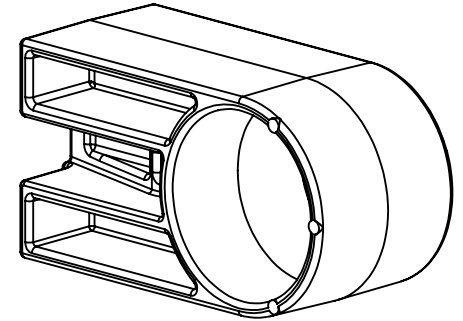


SW

**SPECIAL FEATURES:**

1. DESIGNED FOR USE WITH BT105 OR BT130 TIES
2. HOLE LOCATING PROTRUSION FOR 1/2" MOUNTING HOLE

Revision level			Revision Record	Changed	Date	Approved	Date
Drawing	State	Part					
03.1	Design Release	-	SEE ECN# 014912	CTF	2/5/2019	KAC	2/5/2019



Material
PA66HIRHSUV



Units: inches

Dimension without
tolerances details to:
.xxxx = $\pm .0005$
.xxx = $\pm .005$
.xx = $\pm .01$
.x = $\pm .03$
None = $\pm .06$
 $\angle = \pm 0.5^\circ$
Dimension Formatted in [mm]

The copyright of this
drawing is reserved by
HellermannTyton. It is
issued on condition that it is
not reproduced, copied, or
disclosed to a third party,
either wholly or in part,
without the consent of
HellermannTyton.

Drawn MG 12/12/2003
Approved KAC 12/12/2003
HellermannTyton
North America
Email: corp@htamericas.com
Web: www.hellermann.tyton.com

Article/Type-No CGS1
Title STANDOFF CABLE GUIDE

Drawing-No PRODUCTION : Phase
MT2032002CST

Scale 1:1
Project Number PRP 2032
Format AH
Sheet 1/1