



Cable ties with low profile head

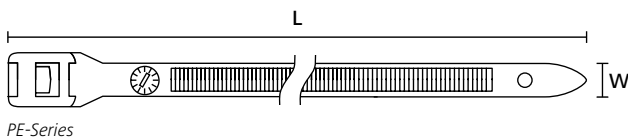
Designed primarily for use within the electrical supply industry these ties are particularly useful in areas with limited space. In addition the low profile head ensures there are no sharp edges. Coloured low profile cable ties are ideal for securing foam padding to playground equipment or for any identification purpose.

Features and benefits

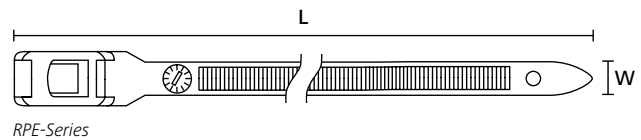
- Outside serrated cable tie with a smooth surface to bundle
- Coloured cable ties can be used for identification
- Broad contact area with cable, minimising risk of damage
- Low profile head for use in restricted area
- Parallel entry for enhanced fit around circular bundles



Low profile cable ties, RPE- and PE-Series.



PE-Series



RPE-Series

PE-Series coloured

TYPE	Width (W)	Length (L)	Bundle Ø max.	N	Material	Colour	Pack Cont.	Tools	Article-No.
PE180	9.0	180.0	42.0	445	PA66HSW	Black (BK)	100 pcs.	1;3;9-12	112-18060
PE400	9.0	400.0	116.0	445	PA66	Blue (BU)	100 pcs.	1;3;9-12	112-18101
	9.0	400.0	116.0	445	PA66	Green (GN)	100 pcs.	1;3;9-12	112-18100
	9.0	400.0	116.0	445	PA66	Red (RD)	100 pcs.	1;3;9-12	112-18102
	9.0	400.0	116.0	445	PA66	Yellow (YE)	100 pcs.	1;3;9-12	112-18103
PE530	9.0	535.0	146.0	445	PA66HSW	Black (BK)	100 pcs.	1;3;9-12	112-53060

All dimensions in mm. Subject to technical changes.

Minimum Order Quantity (MOQ) may differ from package content. Other packaging options may also be available.

RPE-Series releasable

TYPE	Width (W)	Length (L)	Bundle Ø max.	N	Material	Colour	Pack Cont.	Article-No.
RPE275	9.0	275.0	69.0	445	PA66HSW	Black (BK)	100 pcs.	112-27560
RPE350	9.0	350.0	92.0	445	PA66HSW	Black (BK)	100 pcs.	112-35060

All dimensions in mm. Subject to technical changes.

Minimum Order Quantity (MOQ) may differ from package content. Other packaging options may also be available.

Recommended Tools

	1	3	9	10	12
	MK10-SB	MK21	MK6	EVO9	MK9P
	595	595	600	599	602

For more information on toolings please refer to the Application Tooling chapter.



For product specific approvals and specifications please refer to the Appendix.