

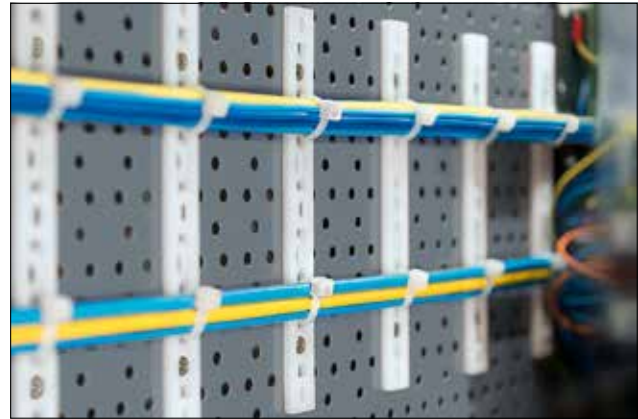
## Mounting Plates for Screw Fixing

### MP-Series for parallel bundling

Many applications require each cable run to be firmly held in place but to be held separately from adjacent cable runs (example - control cabinets, machinery and military systems). The MP series of mounts can achieve this.

#### Features and benefits

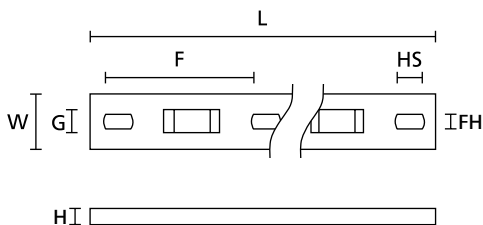
- Allow multiple cables to run in parallel
- Simple to fix with two screws
- Cables are fixed by using a cable tie through any combination of the available slots



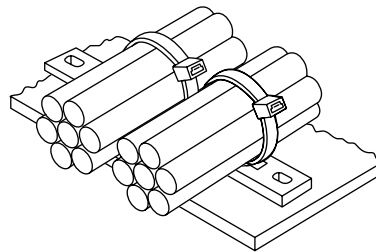
MSMP mounting plates, screwable.



**Material specification**  
please see page 22.



Mounting plates MP and MSMP  
(plan and side view)



Mounting plates in application

TYPE	Width (W)	Length (L)	Height (H)	Hole Ø (FH)	Strap Width max. (G)	No. of bundles	Material	Colour	Pack Cont.	Article-No.
MP2M3	12.7	76.2	3.2	3.7	5.2	2	PA66	Natural (NA)	100 pcs.	151-24219
MP3M3	12.7	108.0	3.2	3.7	5.2	3	PA66	Natural (NA)	100 pcs.	151-24319
MP4M3	12.7	139.8	3.2	3.7	5.2	4	PA66	Natural (NA)	100 pcs.	151-24419
MP5M3	12.7	171.6	3.2	3.7	5.2	5	PA66	Natural (NA)	100 pcs.	151-24519
MSMP5/10	15.8	204.5	5.3	5.1	7.6	5	PA66	Natural (NA)	100 pcs.	151-25519
MSMP6/6	15.8	244.0	5.3	3.8	7.6	6	PA66	Natural (NA)	100 pcs.	151-25619
MSMP4	15.9	167.0	5.2	5.1	8.2	4	PA66	Natural (NA)	500 pcs.	150-83499

All dimensions in mm. Subject to technical changes.

Minimum Order Quantity (MOQ) may differ from package content. Other packaging options may also be available.