



Stainless steel embossing system

eKUBE Printer and Markers

The eKUBE features a silent processing embossing mechanism that can be placed in any industrial or office environment without disturbing employees. It is equipped with an automatic indexing loader and finished markers are ejected through a side slot.

Built-in software provides easy user interface. Data entry is via a portable storage media or wireless LAN.

Features and Benefits

- Fuss free and easy to use
- Easy input using Bluetooth keyboard and monitor
- Autonomous embossing
- Small area required for setup
- Ideal for small/office environment
- Better magazine design with no adjustment to screws or dials
- Low cost of ownership
- Eco-friendly

Embossing drum configuration:

- embossing drum - 60 characters
- standard type (alphanumeric)
- 4 mm emboss character size
- Letters **A to Z**, Numbers **0 to 9**, Symbols **() , ' / # & - +**

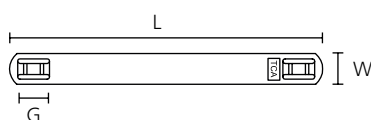


The portable embossing machine eKUBE: Patent Number: SG2013/000083

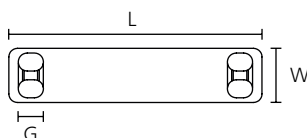
Power Supply	230VAC 50/60Hz
Cycle Time	up to 120 markers/hour
Printer Interfaces	portable storage media or wireless LAN
Dimensions W x H x D	420 mm x 320 mm x 420 mm
Weight	34 kg

TYPE	Article-No.
eKUBE Marking Machine	920-90001

Subject to technical changes.



MBM10x100L



MBM19x90L



Marker Plates for the eKUBE

eKUBE Markers

TYPE	Material	Pack Cont.	Article-No.
MBM19x90L	SS316	400	920-90305
MBM10x60L	SS316	500	920-90301
MBM10x80L	SS316	500	920-90302
MBM10x100L	SS316	500	920-90303
MBM14x100L	SS316	500	920-90304

All dimensions in mm. Subject to technical changes.

Minimum Order Quantity (MOQ) may differ from package content. Other packaging options may also be available.

eKUBE Magazines

TYPE	Article-No.
MAG10x60L	920-90002
MAG10x80L	920-90003
MAG10x100L	920-90004
MAG14x100L	920-90005
MAG19x90L	920-90006

All dimensions in mm. Subject to technical changes.

Minimum Order Quantity (MOQ) may differ from package content. Other packaging options may also be available.