

### Right-Angle Shapes, VG style

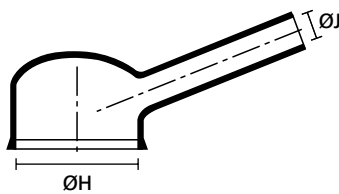
Helashrink 1100 Series, with rib, low profile, high ratio

#### Features and benefits

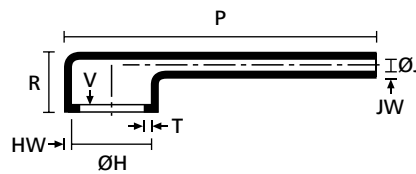
- Use in applications of partially loaded connectors with small cable diameters
- Tail design for easy orientation prior to cooling
- Strain relief for connector cable



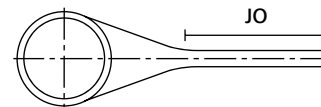
1135-1-G Supplied and recovered.



a: Expanded form (supplied)



b: Fully recovered form (after heating)



Fully recovered form (after heating)

TYPE	ØH min. a	ØH max. b	ØJ min. a	ØJ max. b	P ± 10%	R ± 10 %	HW ± 20 %	JW ± 20 %	JO ± 10 %	V max	T ± 20 %	Designation as per VG-Norm	Article-No.
1133-1-G	19.0	13.0	6.0	2.0	45.0	16.0	1.5	1.1	21.8	3.3	1.0	VG 95343 T06 F 011 A	411-33180
1134-1-G	26.0	19.0	7.5	2.5	67.0	18.0	1.8	1.1	29.2	3.3	1.0	VG 95343 T06 F 012 A	411-34180
1135-1-G	34.0	26.0	9.5	3.0	81.0	19.0	1.8	1.1	35.3	3.3	1.0	VG 95343 T06 F 013 A	411-35180
1136-1-G	43.5	34.0	11.5	3.5	116.0	21.0	1.8	1.1	47.0	3.3	1.7	VG 95343 T06 F 014 A	411-36180

All dimensions in mm. Subject to technical changes.

For these moulded shapes a wide range of material / adhesive combinations are available. Please refer to the Moulded Shapes catalogue.



For product specific approvals and specifications please refer to the Appendix.



Add items to your watchlist!

[www.HT.click/49-291](http://www.HT.click/49-291)

