



Parallel branch cable joints house connections

RELICON PAH-2 with PUR 771

The parallel branch joint PAH is a universal straight-through and branch joint. Suitable as single branch joint with various commercially available branch clamping rings. For polymeric cables and wires made of PVC, XLPE, PE, EPR and utility cables.

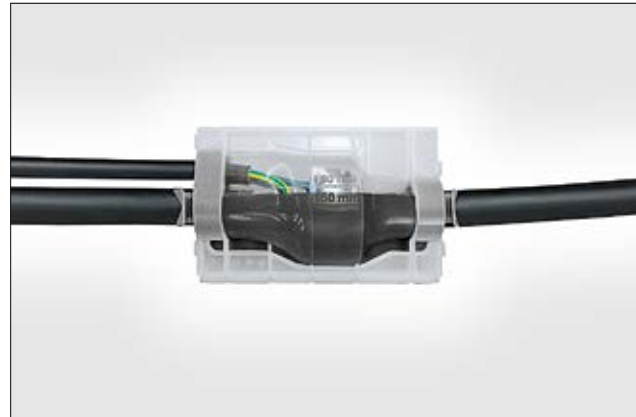
Application: Especially designed branch joint for building and domestic connections to the low-voltage electrical network. Underground, submerged, outdoor, indoor.

Features and benefits

- Impact-proof, transparent moulding shell
- Compact, optimized dimensions
- Longitudinally and transversely watertight
- SF-system
- Joint can be submerged directly after casting
- Immediately ready for use
- Suitable for various compact branch clamping rings

Content of Set / Kit

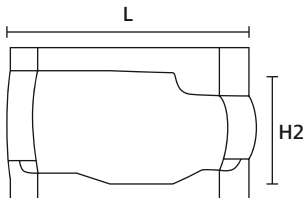
- Cast resin PUR 771
- In a two-chamber pouch
- Transparent moulding shell
- Foam seals, protective gloves, emery cloth
- Cleaning cloth, cable kit, installation instructions
- SF-nozzle (two-chamber pouch)



Parallel branch joint PAH-2 PUR771.

MATERIAL	Polyurethane resin (PUR)
Colour	Black (BK)
Operating Temperature	-25 °C to +130 °C
Storage Temperature	+4 °C to +40 °C
Shelf Life	36 months

RoHS ✓



PAH-2



**Without
branch connector!**

TYPE	Ø Main Cable	Main Cable mm ² min - max		Ø Branch Cable	Branch Cable mm ² min - max		Length (L)	Height (H2)	Resin Quantity	Article-No.
PAH-2 / SF	27-49	4 x 35	4 x 150	15-33	4 x 6	4 x 70	300.0	130.0	1950 ml/2672 g	435-00183

All dimensions in mm. Subject to technical changes.